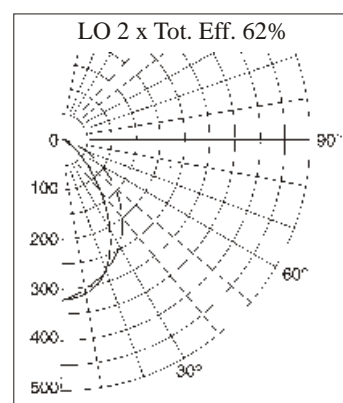
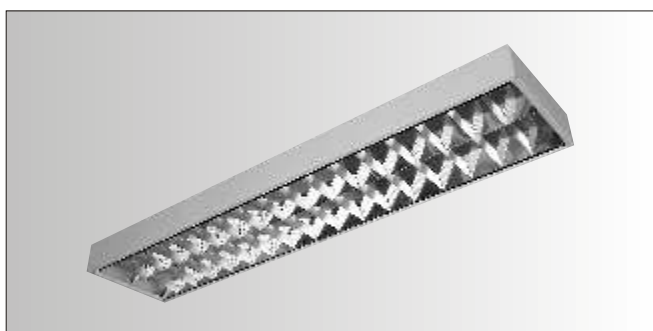


Manarf-Lux

oprawy oświetleniowe
luminaires manufacture

oprawy nastropowe ceiling lights

BETA LO 2 X 18 W - 36 W - 58 W



OPRAWA NASTROPOWA

Korpus: z blachy stalowej o prostych krawędziach, malowany farbami proszkowymi w kolorze białym.

Dyfuzor: Raster wykonany z aluminium o wysokim połysku, odbłyśniki w kształcie litery V, poprzeczki proste z aluminium ryflowanego.

Okablowanie: Zasilanie 230V/50Hz, kondensator kompensujący.

Normatywy: Produkt wykonany zgodnie z normami: PN-EN 60598-CEI-34-21, stopień zabezpieczenia zgodnie z normą EN 60529.

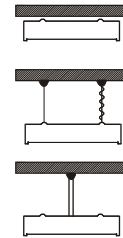
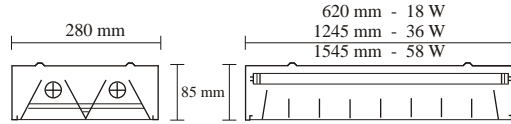
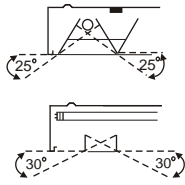
CEILING LIGHTS

Body: in pressed steel, powder coated, white colour.

Diffuser: Very pure aluminium reflector with optical, lamellar, transverse striped screens.

Electric gear: 230V/50Hz, condenser for ballast.

Regulations: Manufactured in compliance with PN-EN 60598-CEI-34-21 standards. The level of protection complies with the EN 60529 standard.



LUMINAIRES

SELECTION TABLES

LO 2 X 18 W

LO 2 X 36 W

LO 2 X 58 W

Type of light sources	standard lamp		three phospor lamp	
Luminous flux	1150 lm		1350 lm	
Height 3 m. - 0,80 m.				
Average light intensity	300 lux	500 lux	300 lux	500 lux
Area [m2]	No. of luminaires		No. of luminaires	
60	16,6	27,7	14,2	23,6
80	22,2	36,9	18,9	31,5
100	27,7	46,2	23,6	39,3
200	50,7	84,5	43,2	71,9

Type of light sources	standard lamp		three phospor lamp	
Luminous flux	2700 lm		3350 lm	
Height 3 m. - 0,80 m.				
Average light intensity	300 lux	500 lux	300 lux	500 lux
Area [m2]	No. of luminaires		No. of luminaires	
60	7,1	11,8	5,7	9,5
80	9,4	15,7	7,6	12,7
100	11,8	19,7	9,5	15,8
200	27,0	45,0	23,0	38,0

Type of light sources	standard lamp		three phospor lamp	
Luminous flux	4150 lm		5200 lm	
Height 3 m. - 0,80 m.				
Average light intensity	300 lux	500 lux	300 lux	500 lux
Area [m2]	No. of luminaires		No. of luminaires	
60	4,6	7,7	3,7	6,1
80	6,1	10,2	4,9	8,2
100	7,7	12,8	6,1	10,2
200	23,0	39,0	19,0	31,0

Type of light sources	standard lamp		three phospor lamp	
Luminous flux	4150 lm		5200 lm	
Height 3 m. - 0,80 m.				
Average light intensity	300 lux	500 lux	300 lux	500 lux
Area [m2]	No. of luminaires		No. of luminaires	
60	4,6	7,7	3,7	6,1
80	6,1	10,2	4,9	8,2
100	7,7	12,8	6,1	10,2
200	23,0	39,0	19,0	31,0